

DISPLAYIT INC.

— STRUCTURAL BRANDED SOLUTIONS —

SALESFORCE

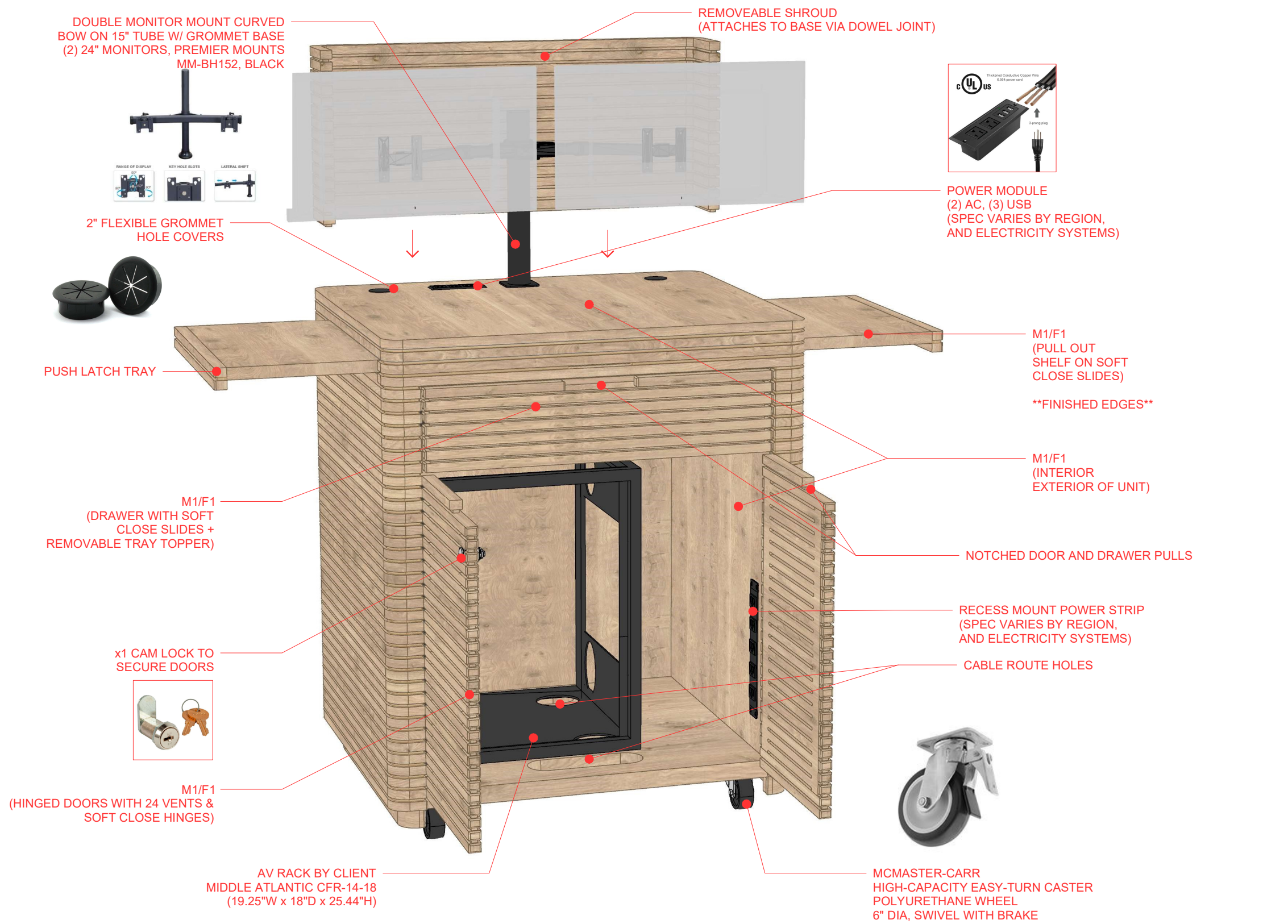
LAYERED CAKE TECH CART - EQ-07

05/17/21

CREATE. INNOVATE. EVOLVE.

ITEM: EQ-07





MATERIAL

- M1 WHITE OAK VENEER (PLAIN SLICE)
- M2 3/4" MDF
- M3 1/2" WHITE MELAMINE
- M4 1" STEEL TUBE
- M5 3/4" STEEL TUBE
- M6 1" STEEL TUBE ELBOW
- M7 3/4" STEEL TUBE ELBOW
- M8 16GA CRS
- M9 12GA CRS

FINISH

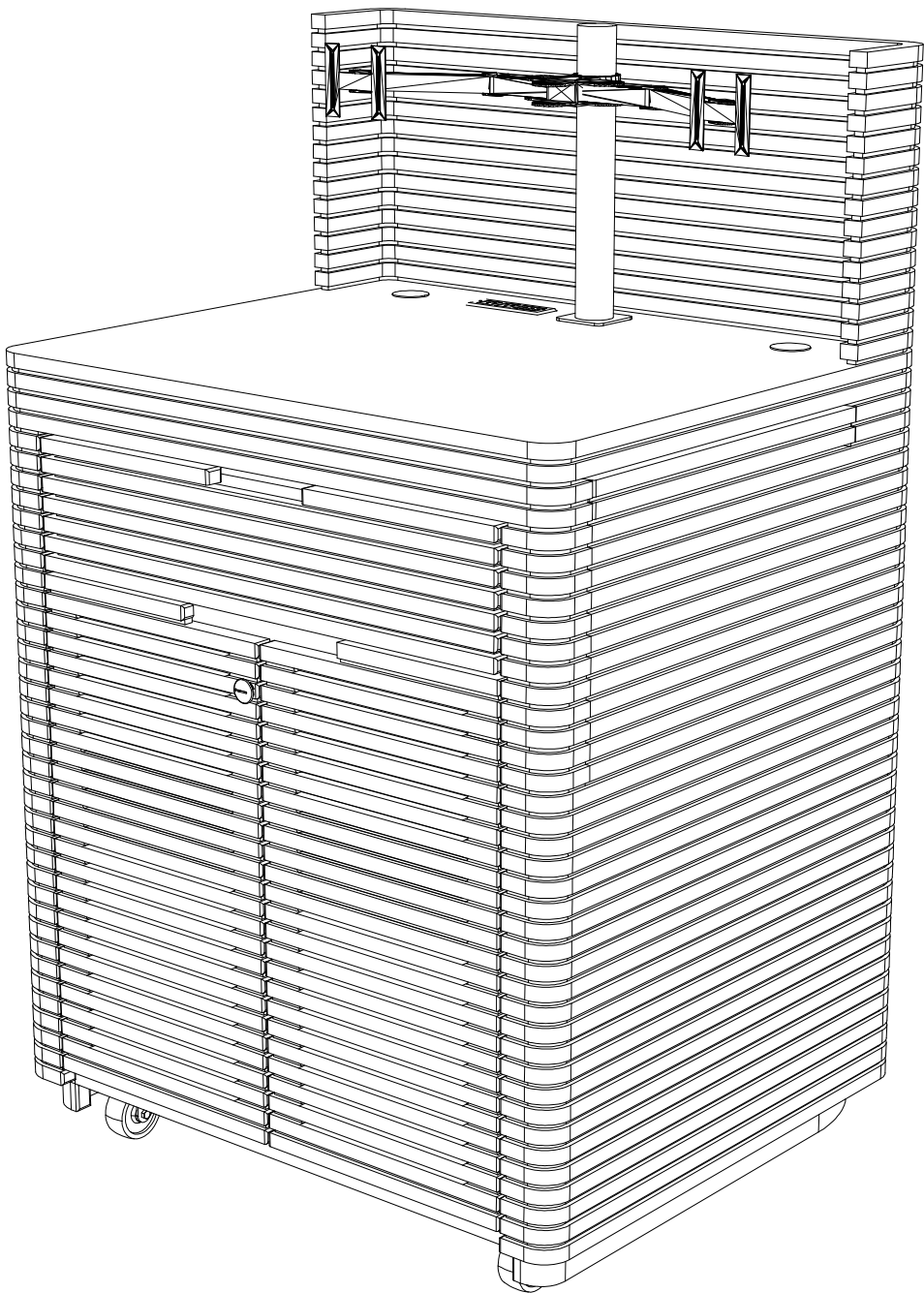
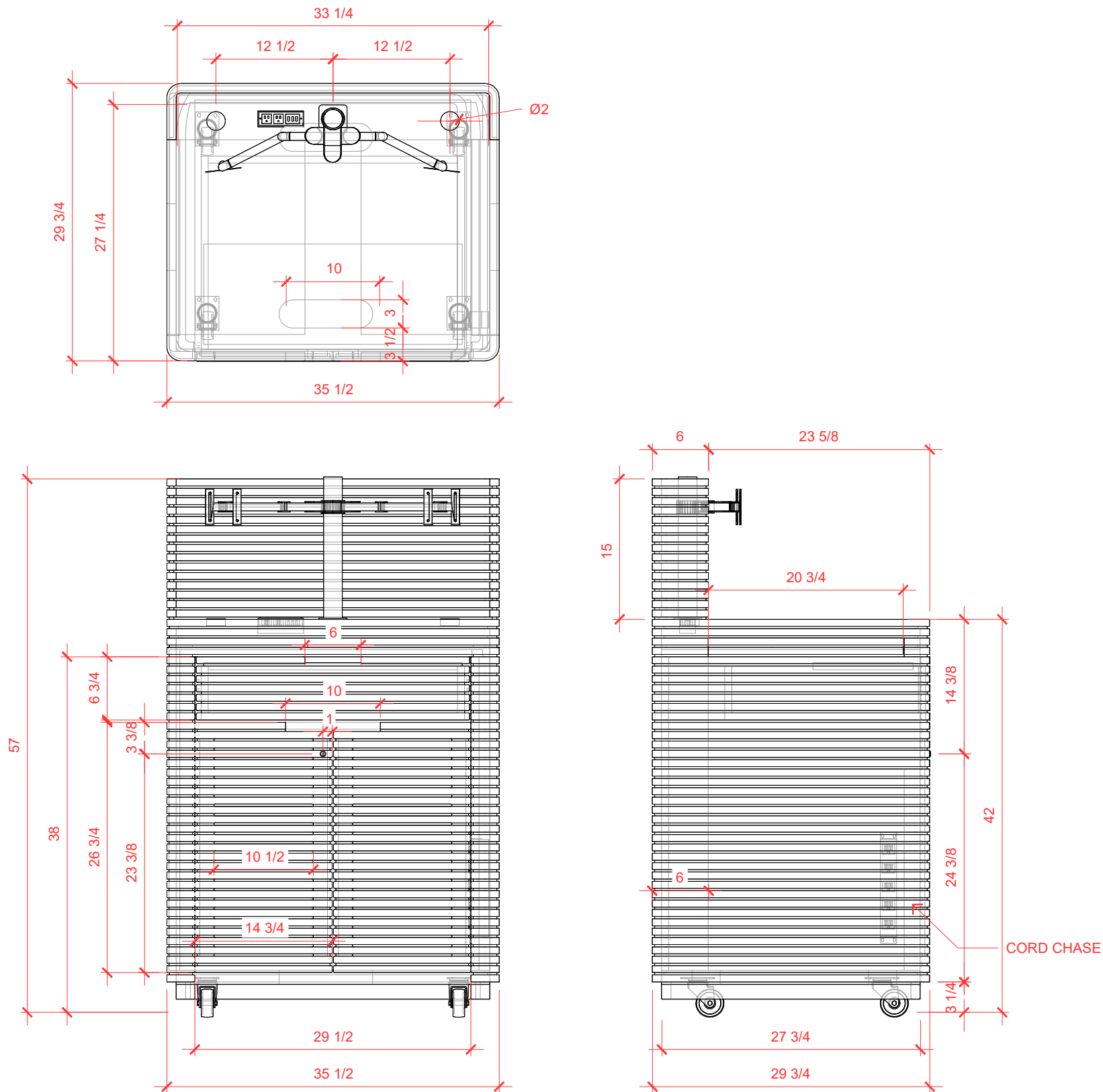
- F1 CLEAR COAT
- F2 RUSTIC WHITE OAK VENEER
- F3 3/8 CORK
- F4 2MM HEATHER GREY FELT
- F5 WHITE PC

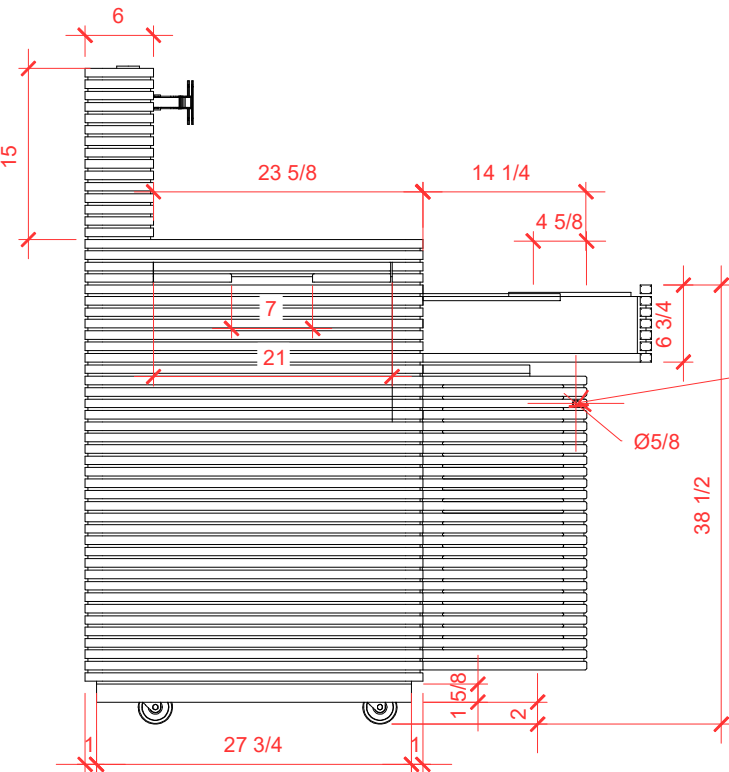
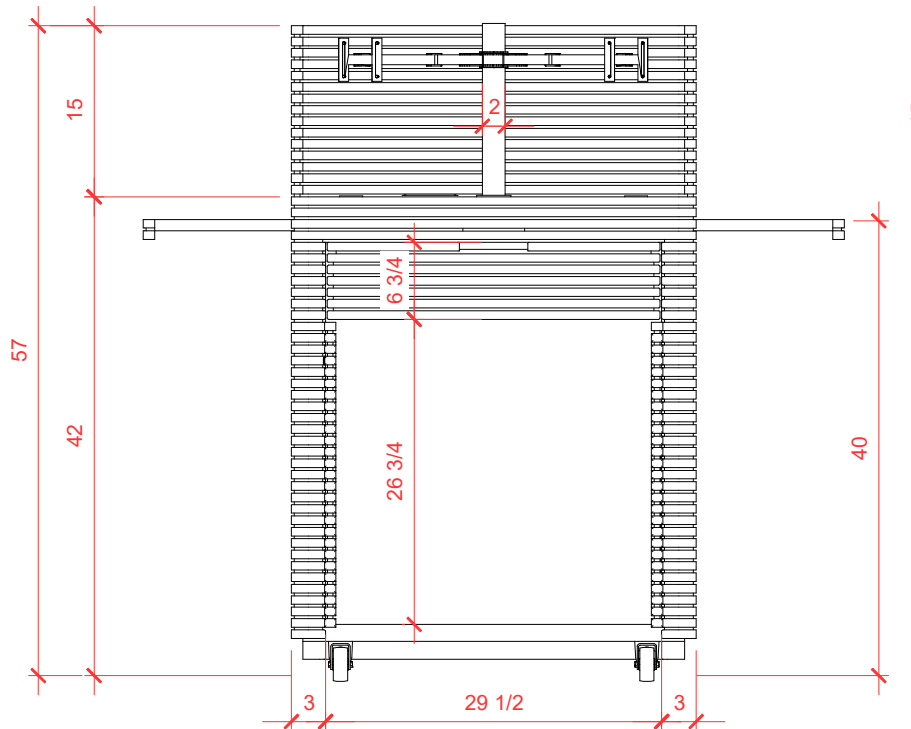
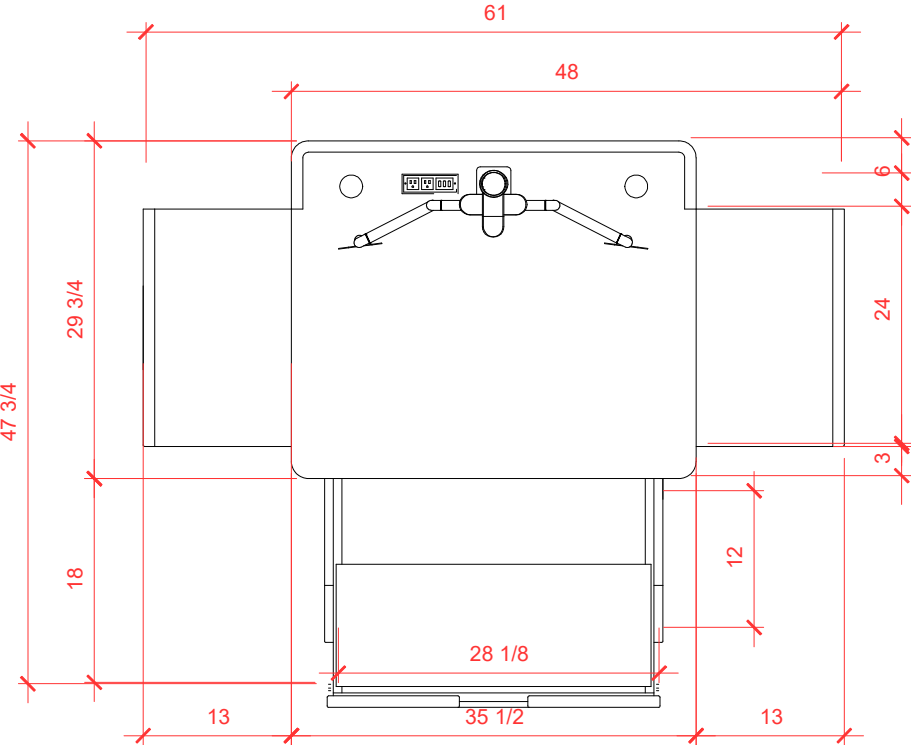
ELECTRICAL

- [1] RECESS MOUNT POWER STRIP
- [1] POWER MODULE (2) AC, (3) USB

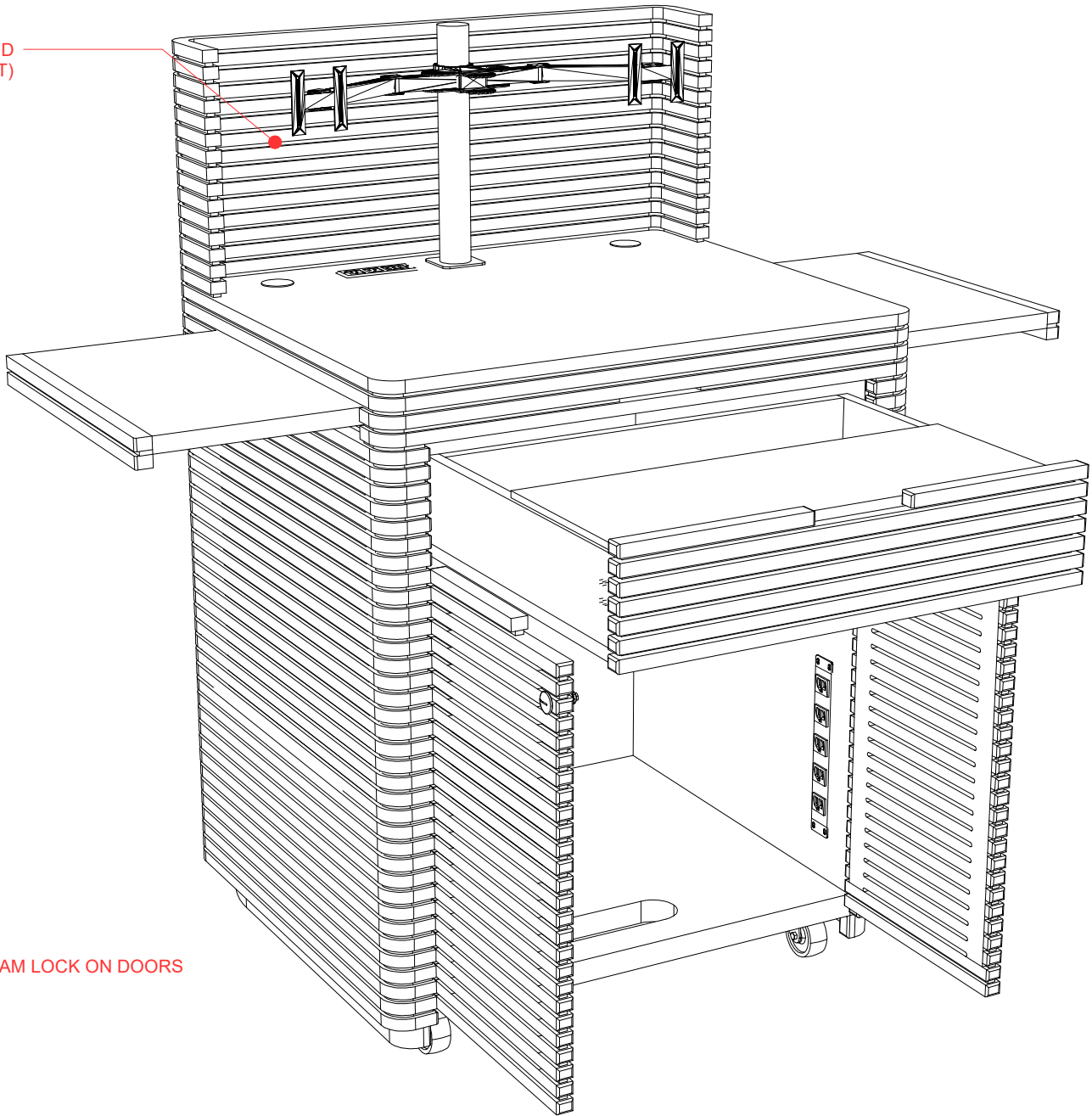
HARDWARE

- | QTY. | HARDWARE |
|------|---------------------------------|
| [6] | DRAWER SLIDES |
| [5] | MINNA DRAWER PULLS |
| [2] | SWIVEL LOCKING CASTERS |
| [2] | BLACK FIXED CASTERS |
| [1] | CAM LOCK |
| [2] | 2" FLEXIBLE GROMMET HOLE COVERS |
| [1] | DOUBLE MONITOR MOUNT CURVED BOW |





REMOVABLE SHROUD
(ATTACHES VIA DOWEL JOINT)



CAM LOCK ON DOORS